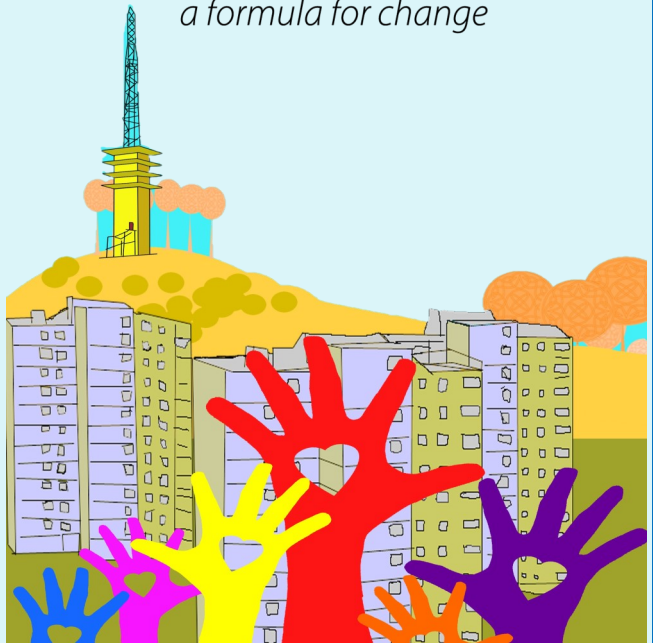


**Grace Mary to Lion Farm
Big Local Plan
2020 - 2025**

Gm²Lf
a formula for change

SUMMARY



The Grace Mary to Lion Farm (GM2LF) Big Local is one of 150 community-led groups throughout England and Wales who have been granted £1million to be spent over 10 years.

The grant was awarded in 2014 and our plan for 2020 - 2025 covers the remaining period of potential funding and builds upon the priorities from our two earlier plans. It focuses on the post GM2LF legacy and the final steps to achieve this.

The plan reflects the needs and aspirations of local residents as we seek to continue to use the money to bring change and make a difference within our local community. Big Local is unlike other initiatives that have impacted the area as the programme is led and developed by local people.

Local Trust | **Big Local**

To see the full five year plan please visit www.gm2lf.org or email Helen Trueman at helen.gm2lf@outlook.com

Our Shared Vision

Our formula for change is local people working together for a better life - sustaining a community that is resilient, confident and enjoyable

Our Priorities

From ongoing consultation and research **five key priorities** for the area have been identified to reflect the current needs of the community and reflect the legacy of the GM2LF Big Local. The priorities will focus on positive outcomes for people of all ages. We will seek to support and develop activities for each priority, with a focus on family interest throughout. From 2020 to 2025 our plan includes:

Programme Support

- Capacity development
 - Partnership running costs
 - Communications
- Managing the remaining five years of the programme
 - People know and understand what GM2LF Big Local is
 - People are kept up to date where the programme is 'at'
 - Success is celebrated
 - Consultation and engagement is ongoing
 - Big Local remains resident driven

Bringing the Community Together

- Sustain the voluntary and community sector organisations as community hubs
 - Enhance the community spirit, where neighbours look out and care for one another
 - Increase opportunities for the community to come together and actively participate in the GM2LF Big Local
- Grant programme available (grants of up to £5,000)
 - Hold events and workshops

Strengthening the Community

- Improve community safety and the environment
- Strengthen and sustain new and existing activities
- Increase the financial resilience of residents
- Improve networks of organisations and partnership working
- Find and develop a central resource and community hub to improve support for people
- Increase the physical signs of the GM2LF Big Local

- Work with Tipton Litter Watch and hold annual Dump your Junk/Litter picks
- Work with the Police and Fire Service on community safety initiatives
- Grant programme available (grants of up to £2,000)
- Financial Engagement Worker and programme of support on money matters
- Hold forums and workshops
- Collaborative working across the area
- Look for opportunities to develop a community hub
- Look for opportunities for open spaces (gym or play area)

Investing in Future Generations

- Work with children and young people to increase their confidence and skills to shape their own community
- Increase the support and training for residents in the area

- Youth Enterprise Fund
- Hold training for children and young people
- Develop a training programme
- Support with CV writing and deliver online training

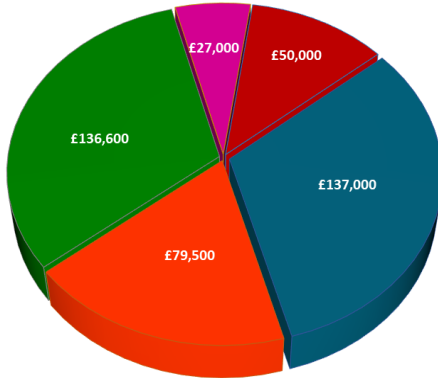
Supporting the Community Affected by the Coronavirus / COVID - 19

- Increase the support for families and individuals
- Increase the support for groups and organisations

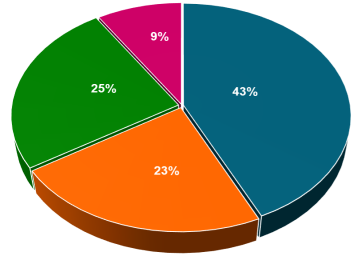
- Address physical and mental health issues
- Address capacity and skills issues

Our Big Local Budget (2020 - 2025)

**Budget Activities
(2020-2023
Total £430,100)**



**Costed Vision
2023 - 2025**



- Programme Support
- Bringing the Community Together
- Strengthening the Community
- Investing in Future Generations
- Supporting the Community Affected by the Coronavirus/COVID-19

In order to help us achieve the priorities we have allocated funds in an action plan for the next three years. The costed vision looks at allocating the remaining funds for the final two years as indicative percentages.

Our Legacy

The GM2LF Big Local's overarching legacy is to increase the skills and knowledge of local people, for people to be able to identify and address their own local priorities. We will aim to upskill and empower young people to become community leaders and to make the most of our assets as community hubs through both strengthening and building their capacity to react to community needs.

Making it Happen

The GM2LF Big Local Partnership is responsible for driving the Big Local forward, making sure it remains resident led and enables local people to improve the area and achieve the long term vision.

Partnership members are local residents, and people who work or volunteer in the area.

Representatives from key organisations in the area include St James Church, Holy Cross Church, Oakham Church and Wallace Youth Project.

Visit our website: www.gm2lf.org

Like us on Facebook: Grace Mary to Lion Farm Big Local (GM2LF)

Follow us on Twitter: @GM2LF_Official