

SEPTEMBER 2015

Gm²Lf
a formula for change

Changing Times

AUTUMN EDITION

**BIG
LOCAL
WORKING
FOR YOU.**

Big Local Invite

INSIDE THIS ISSUE:

Big Local's 2
Community
Festival

In Bloom 3
Winners

What's 4/5
Going on ?

Activities 6
for Children
and Young
People

Services in 7
the Area

What's 8
Next for
Big Local

GM2LF Big Local Partnership invite you to attend our:

Annual General Meeting

Wednesday 14th October 2015, 6pm
at Oakham Evangelical Church City Rd, Oldbury,
West Midlands B69 1QZ

Live Music from the very talented James Wythes,
a local artist from Cradley Heath



Join us for a entertaining evening to:

- Hear about what's been happening with Big Local
- Find out what's happening next with Big Local
- Watch a dance performance from the Lion King and an exciting Kick boxing demonstration
- Enjoy the free Buffet and Refreshments

If you would like to know more about joining the Partnership Board,
nominate yourself or someone else please contact Kate Cross at Lion Farm
Action Centre on 0121 544 3094.

Big Local got Fit for Free at Community Festival

A great day was had by all at the Community Festival held on Saturday 1st August 2015, organised by the Big Local Partnership and Portway Lifestyle Centre.

Kate Cross and Sharon Offley, members of the Big Local Partnership were welcoming and registering all of the 252 people that attended the free event. People travelled from all areas including Dudley, Walsall, Wolverhampton, Smethwick, Birmingham, London and, of course the GM2LF Big Local area.

The activities available were; the climbing wall, trampolining, badminton, archery, gym inductions, karate/aikido demonstrations, zumba, pilates, kids dance, boxercise, football coaching, sumo rugby, target football, dodge football and a lads and dads kick about.

In the market hall the Big Local Partnership had a stand explaining that the event was

part of their 10 year plan to spend a million pound in the regeneration of the area, that the event fell under the theme of Health and Wellbeing and were kept busy giving away free big local balloons. Others in the hall included Murray Hall Community Trust who were giving information on their Community Offer scheme for Rowley Regis and Tividale, Mytime Health giving free BMI tests and offering free individual health plans, a Portway Lifestyle Centre Gym Instructor offering a discounted membership for those who signed up on the day, Portway Family Medical Practice giving free blood pressure tests and promoting their practice and Squiggles Face Painting who were kept extremely busy all day with their fantastic designs being created on the many children that waited patiently.

Winners of the Garden in Bloom completion were presented by Jenny Chidley, Kate Cross and Gracie the Lion with cash prizes of £100 and £50. Winners



included; Janet Copson, May Dudley, Sarah Cox, Marianna Szentgyogyi, Sandwell Adventure Play Association, Dorothy Claxton and overall winner Grace Mary Primary School. There was also a cash raffle prize of £25 which was won by Debbie Ruston

Refreshments were available all day including; a BBQ selling hotdogs and beef burgers, a slushy stall outside the main entrance and the centre's café.

The Big Local Partnership would like to thank John Harling of Portway Lifestyle Centre for helping to organise the activities and a big thank you to all the staff and volunteers who helped on the day and contributed to a very successful event to promote health and fitness to children and adults in the surrounding area of GM2LF.



In Bloom Winners Announced

The Grace Mary to Lion Farm Big Local Partnership launched the Big Local in Bloom Competition in January 2015 and the competition winners were announced at the Big Local Community Festival, which was held on 1st August 2015 at Portway Lifestyle Centre.

Judging the competition in July the Creative Black Country Team said they were looking for entries which showed the most impact; the amount of effort carried out; the variety of flowers or shrubs and the overall enhancement of appearance.

There were five categories across the Big Local area, plus one overall winner. Cash prizes of £100 and £50 were awarded to winners.

School and Overall Winner
Grace Mary Primary School

Oakham

1st - Janet Copson

Wallace Portway

1st - May Dudley

Grace Mary

1st - Sarah Cox

2nd - Marianna Szentgyogi

Lion Farm

1st - Sandwell Adventure Play Association (SAPA)

2nd - Dorothy Claxton

The Partnership would like to thank everyone who took part and those who helped with organising the competition. In addition thanks go to the team at Creative Black Country for judging the competition and to Tesco for kindly donating packs of seeds.

The partnership are hoping to hold the Big Local in Bloom competition annually, so get your green fingers ready for next year to be in with a chance of winning.



What's on each week in and

Monday

Oakham Library 10:15-11am Story and Rhyme Time . For under 5's a morning story and rhyme time

St James Church 1-3pm Indoor Carpet bowls
Open to all within the Big Local area, competitive fun for all

Lion Farm Action Centre 1-3pm Art Group
Open to all within the Big Local area, Art Tuition for both the beginners and experts

Lion Farm Action Centre 3:30-5pm After School Club Dance session also held on a Friday and midweek activities

Oakham Library 3:30-4:30pm Art Club.
Children can come and be creative with a variety of materials

Oakham Library from 4pm Family Film Club
Families and Children invited to come and watch our family films

Holy Cross Church 6-7:30pm Karate
Keep fit and safe with this Martial Art all levels welcome

St James Church 7—8.30pm Slimming World
A friendly group for those that want to lose weight or feel better about themselves

Tuesday

Lion Farm Action Centre 9.30 –11.30am Job Club. Providing support to find employment, help with CV writing and advice and guidance

Oakham Evangelical Church 9:15am Carer and Toddlers. Preschoolers play, make new friends and Carers get a chance to meet

Holy Cross Church 9:30am Craft Group
A great time to be creative and produce some crafty art.

Lion Farm Action Centre 10:30 Health Walk
Meet at the Centre and walk around the hidden beauty of our Big Local Area and beyond.

Lion Farm Action Centre 1—3pm Over 50s Friendship Club
Quizzes, craft and chat and fun

Holy Cross Church 5-7pm Youth Club
A great place to meet up with friends to take part in a range of activities

Wallace Youth Cub Tuesdays 5.30-7.30pm
8-16 years old . Great opportunities and activities for young people

Oakham Evangelical Church 7pm Tuesday Crew Activities include Pool, table tennis, games, arts and crafts tuck shop for Key stage 2 children

Wednesday

Lion Farm Action Centre
Club. Providing support help with CV writing and

St James Church 9-12pm
A free cuppa and something welcome

St James Church 9-11am
A play and stay toddler group
Farm Action Centre at St

Holy Cross Church 10:30
Council Surgery.
Get help with problems

Rounds Green Library 10
Natter. 2.30pm Friends of
Library meeting

St James Church 3.30 - 5
Academy and Fitness, Kick

St James Church 6 - 7.30
Karate Club (Age 5+). Also
6-7.30pm

Holy Cross Church 6-7:30
Keep fit and safe with this
levels welcome

Saturday

Rounds Green Library 10-11am
Councillor Surgeries Bring your ideas and concerns to your local councillors

Portway lifestyle Centre 10.30-2:30pm Eminence Dance Works
Creative Dance Group for all

Oakham Library 10:30-12pm
Breakfast Club for Children 8 and over. Free Toast and drinks

Rounds Green Library 11-11:45am
Colouring and Craft Club
Colouring sheets and puzzles

Oakham Library 12-1pm Colouring Club
Colour your favourite pictures

Rounds Green Library All Day
Homework Help, get support and time to complete all your homework

Sunday

Oakham Evangelical Church
10am Communion Service a time to stop , reflect and refresh
6:15pm Evening Family Celebration, A lively family friendly service.

St James CofE Church 10-11am
Morning Worship and Sunday School
A friendly traditional Church, sharing God's love to all

Wednesday

9.30-11.30am Job
to find employment,
advice and guidance

Place of Welcome
ning to eat, everyone

Parent and Toddlers
group run by Lion
James Church

10-11:30am Sandwell
and repairs

9-12pm Knit and
of Rounds Green

5pm Lowes Combat
ckboxing (Age 8-12)

5pm Tividale Shotokan
o held on a Friday

5pm Karate
is Martial Art all

Thursday

Lion Farm Action Centre 9.30-11.30am Job
Club. Providing support to find employment,
help with CV writing and advice and guidance

Oakham Evangelical Church 10.30am. TLC
Club for senior citizens, meet up, chat and
take part in activities. Lunch provided

Hope Church 10:30-12:30pm Indoor Bowling
for over 50s. Great activity for unwinding and
getting rid of stress

Lion Farm Action Centre 11:30-1:30pm Online
Computer Training
From the basics to advanced IT Skills

Lion Farm Action Centre 1-3pm Art Group
Open to all within the Big Local area, Art
Tuition for both the beginners and experts

Portway Lifestyle 6:30-7:30pm Tae Kwon Do
age 5-55 combines combat and self-defence
techniques with sport and exercise

Portway Lifestyle 7-8pm Karate Beginners
8-9pm Karate for those 18 plus unless
accompanied by an adult

St James Church 7-9pm RE:Act Youth Club
Offering a range of craft, sports and a place
relax and meet up with friends

Friday

Lion Farm Action Centre 9.30-11.30am Job
Club. Providing support to find employment,
help with CV writing and advice and guidance

Holy Cross Church 10am Over 60's exercise
with Bingo and a cuppa

St James Church 1.30-3.30pm Bingo
A locally run social group for all residents, join
the fun of an afternoon of Bingo

Lion Farm Action Centre 1:30-3:30pm Multi
Crafts
Try your hand at something a little crafty.

Holy Cross Church 1:30pm Bingo
A great get together for all residents

Holy Cross Church 2:30pm Cards and
Dominos
A social gathering for all

Holy Cross Church 5-7pm Youth Club
A great place to meet friends and take part in
a range of activities

Oakham Evangelical Church 7pm Friday Youth
Club . Activities and chance to meet friends.
For young people aged 11 plus

Holy Cross CofE Church
6pm Evening Worship
A friendly group meeting for worship
and prayer

Newbury Lane Methodist Church
10:45am Morning Service and Junior
Church
6pm Sunday Evening Service every
4th Sunday

Big Local Communications

GM2LF Big Local Partnership are currently revamping their website so keep
your eye on **[www..biglocalmillionshare.org](http://www.biglocalmillionshare.org)**

If you would like to submit an article for inclusion on the website or in this
newsletter please call Kate Cross on 0121 544 3094.

***Mention of products or services in this newsletter should not be construed as an
endorsement or recommendation by GM2LF Big Local Partnership.***

Focus on Children & Young People

Dance through the Decades with Lion Farm Action Centre

On 26th June 2015, Lion Farm dance group performed at St James Church in front of friends, family and local community in order to showcase their hard work during the past year. The show included singing, dancing and a performance by Lion Farm Action Centre Choir. The children had a good audience including teachers from St James C of E primary, unicorns day nursery and an employee from the funders of the afterschool club, children in need.

Lion farm dance club is a free dance

class funded through children in need. The dance group runs on Mondays at Fridays at St James Church, from 3.30pm till 5pm for children aged 8-12 (term time only).

In September 2015 the children will start to learn choreography from the decades, including swing, rock n roll, old school Street, and 70's inspired dance moves ready for their show "Through the Decades" in spring 2016.

As the dance group is free, from September all children will be asked

to pay a £1 per session, this contribution will be saved in order to pay for their costumes and accessories for performances. As costumes can be very expensive this is a cost effective way of ensuring that all children are able to purchase what is needed.

If you would be interested in joining Lion Farm Dance Group, please pop into Lion Farm Action Centre, Harry Price House, Lion farm, Oldbury, B69 1EQ to pick up a registration form or alternatively call 0121 544 3094.

Kick Boxing Sessions a Knock Out Success



During Lion Farm Action Centres Summer Play Scheme the attendees had the opportunity to learn self-defence through Lowes

Combat Academy and Fitness.

The sessions have been tutored by Daniel Lowe a local British kickboxing champion. The children

thoroughly enjoy the sessions which includes fun fitness, self-defence, technique and games.

In September the kickboxing sessions will continue at Lion Farm Action Centres as part of the After School Club. These will take place at St James Church, Shelsley Avenue on a Wednesday 3.30-5pm for children aged 8-12 years.

If you would be interested in your child learning self-defence and

kickboxing by a fantastic tutor please pop into Lion Farm Action Centre Harry Price House, Hartlebury Road, Oldbury, B69 1EQ to pick up a registration form or alternatively call 01215443094.

(Please note, there are limited spaces due to insurance purposes and any children wanting to participate must be registered or put on to a waiting list.)

Wallace Youth Project

Wallace Youth Project, which is based in the centre of the Big local, Grace-Mary to Lion Farm, secured funding from youth offer through their local Councillors.

Wallace Youth project took 16 young people to an activity weekend 7th-9th August. They stayed in a Bunk House at Lickey Hills. While at the weekend the young people enjoyed team building exercises, forest walks and a day at



Crofton Park, where they had a picnic. The Wallace Youth Project attempt to take the young people to an off site weekend at least once a year.

If you have any young people between the age of 8 to 16 years old and live in the Big local area, Please feel free to pop along and join the youth club on Tuesday evenings 5.30pm - 7.30pm at Darley House, Community Room, Wallace Close, Oldbury. B69 1HP.

For more details contact Tracy Lowe on 07817175998 or email: lowe.tm@gmail.com

Services in the Area

Flair in the Air with Memories Balloons

On Saturday 1st August, Memories Balloons did an amazing job decorating Portway Lifestyle Centre, Newbury lane with balloons for the Big Local Community Event.

Memories can supply and decorate for all function and party requirements.

For more information or a free quote please contact Tracy Lowe on 07817 175998 or email lowe.tm@gmail.com



Face Painting a Roaring Success



Squiggles Face Painting were a huge hit on Saturday 1st August at the Big Local Community Event held at Portway.

Squiggles provide face painting, glitter tattoos and balloon modelling across the West Midlands. They are available for children's parties, weddings, christenings, fetes, promotions, corporate fun days etc and offer a fun, friendly and professional service.

For more information visit: www.squigglesfacepainting.co.uk

Check Out What's on Your Doorstep at Portway Lifestyle Centre

Portway Lifestyle Centre is an exciting leisure facility developed on the former Oldbury Leisure Centre site. The centre is a vibrant and unique sports, health and wellbeing centre for the whole community and a centre of excellence for people with disabilities.

The facilities at the leisure centre include:

- 115 station gym – including a synergy 360, free weights areas and adapted equipment
- Dance studio – 60 plus fitness classes, performing arts and dance programme
- Climbing wall – Closer to the Edge - 10metres high, 24 different routes of varying levels of difficulty
- Sports Hall – 4 court hall for badminton, basketball, football, netball and volleyball
- Hydro therapy Pool – 10m x 5m 35 degrees, 360 places available on Swim

School programme, pool parties, private hire, splash time and gentle exercise

- 2 Multi –purpose Halls– bowls, fitness classes, conferences for up to 120 people, martial arts
- 3G pitch – full size and divided into three pitches for local clubs, football coaching, competitions and Sandwell minor league
- Sensory room – story time, different themes and baby relaxation sessions
- Life Trail - 7pods with 4 exercises on each pod and functional training
- A Sensory Garden and a Community Café

For more information call the centre on 0300 012 0121. Visit website: www.slt-leisure.co.uk



What's Next for Big Local

Get Online with Learn My Way

Online computer courses will be delivered in venues across the Grace Mary to Lion Farm Big Local area from September with the Learn My Way website which uses online courses for people who want to learn more about using a computer.

There are courses for all abilities from the absolute beginner, including how to use a mouse and keyboard to those who want to brush up their skills in certain areas of I.T. such as using social media, sending and receiving emails or using NHS online services.

The courses are divided into sections to make them easily accessible and cover a variety of subjects including how to use the internet safely and how to use government websites, including Universal Jobmatch for those looking to get back into work. There is an option to use headphones to listen to instructions as the course is displayed on the screen.

The courses are delivered in a relaxed atmosphere, and there is always support available from onsite course facilitators.

To find out more about Learn My Way please contact Kate Cross at Lion Farm Action Centre on 0121 544 3094



'Our Learning' Fund - Homework Clubs

GM2LF Big Local 'Our Learning' small grants are available to groups and organisations based and/or delivering services in the Grace Mary to Lion Farm area. Not-for profit, voluntary and community groups, social enterprises can bid for up to £900 and statutory agencies £600. Bids from Statutory agencies must be for activities which are additional to government funded services.

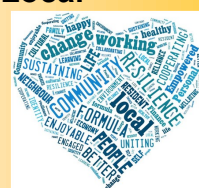
Grants are available for Homework Clubs which must demonstrate that they meet all of the following outcomes:

- There is more one-to-one support for children and young people
- There is an increase in 'informal' learning that supports Maths and English skills
- Activities contribute to the reduction of childhood poverty

To find out more, see if your project is eligible and express an interest in applying, please contact Kate Cross, Lion Farm Action Centre on 0121 544 3094 or visit: www.biglocalmillionshare.org

Further updates will be added to the Grace Mary to Lion Farm (GM2LF) Big Local website: www.biglocalmillionshare.org

If you would like to be added to the Big Local mailing list please contact:
Kate Cross at lionfarmactioncentre@yahoo.co.uk or
Helen Trueman at helen@scvo.info



Local Trust

Big Local

Gm2Lf
a formula for change